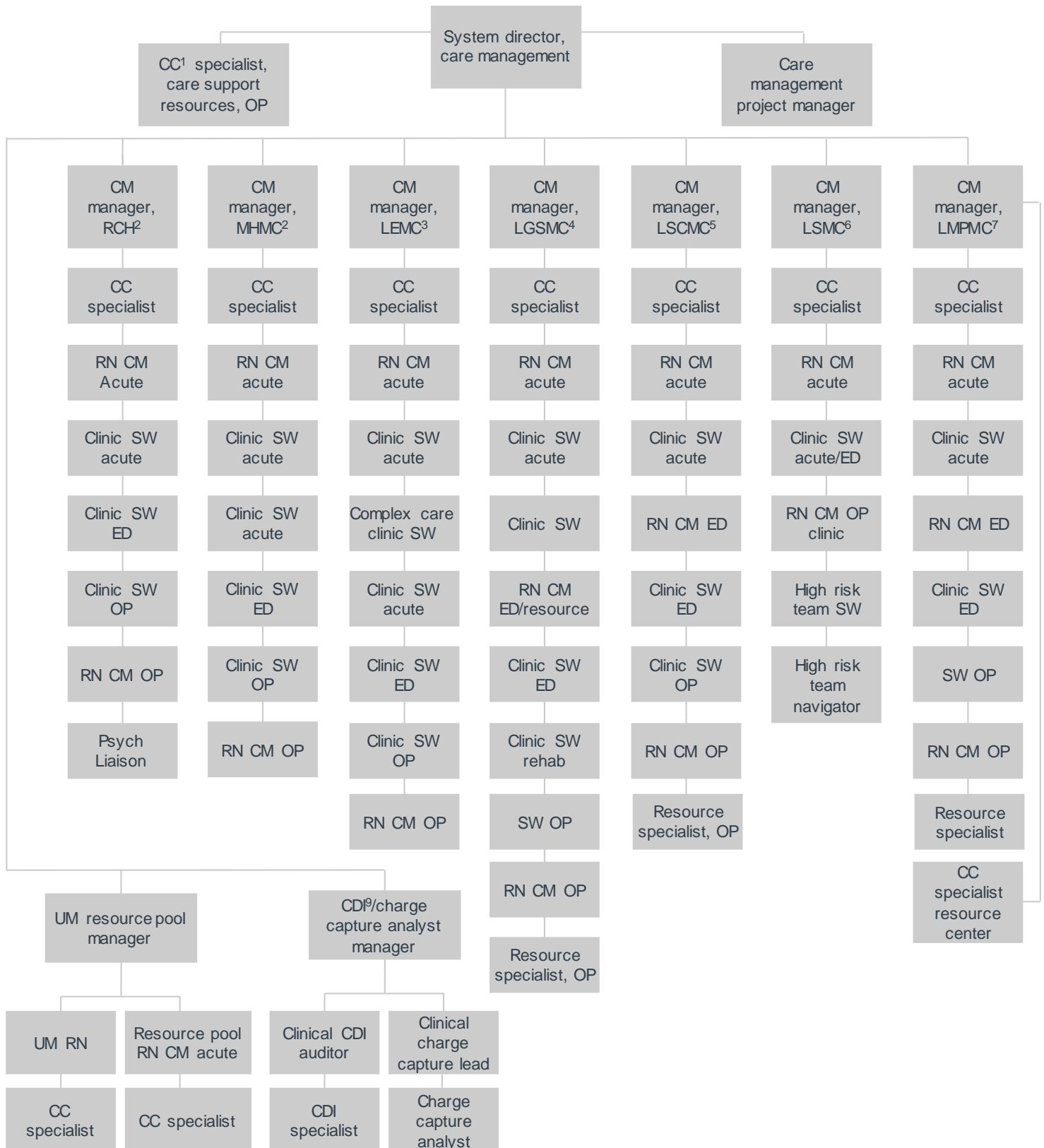


# Organizational chart



1. CC is care coordination.  
 2. RCH is Randall Children's Hospital.  
 3. MHMC is Legacy Mount Hood Medical Center.  
 4. LEMC is Legacy Emanuel Medical Center.  
 5. LGSMC is Legacy Good Samaritan Hospital and Medical Center.  
 6. LSCMC is Legacy Salmon Creek Medical Center.  
 7. LSMC is Legacy Silverton Medical Center.  
 8. LMPMC is Legacy Meridian Park Medical Center.  
 9. CDI is clinical documentation improvement.

Source: Population Health Advisor interviews and analysis.